

NFC App Quick Start Guide

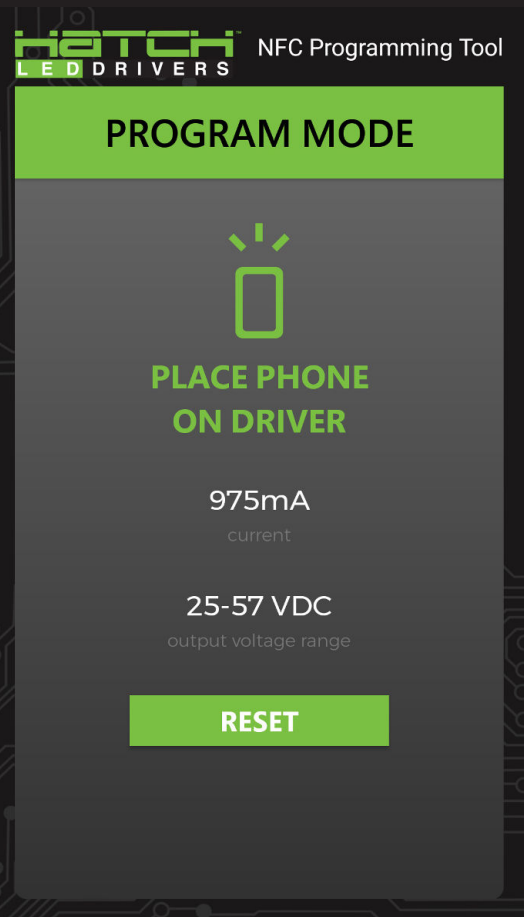
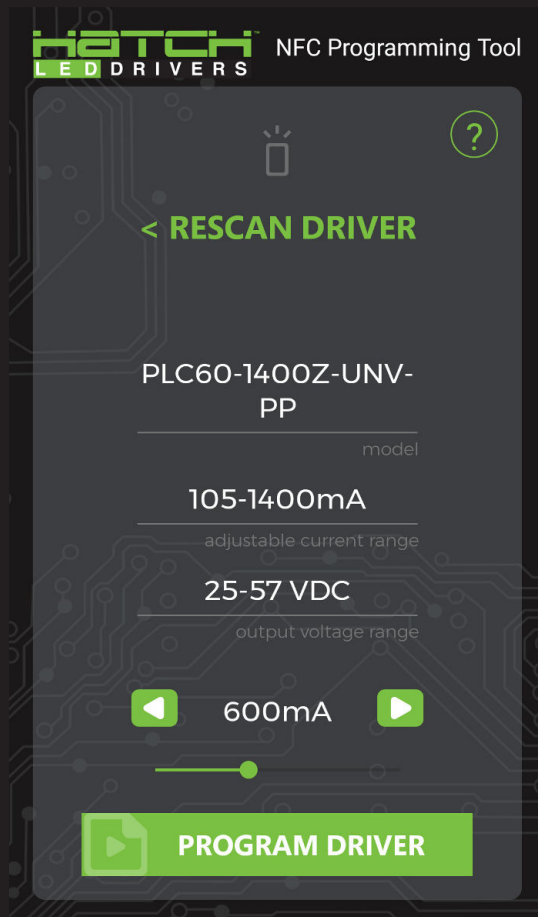
Download the Phone App

Go to the Google Play Store, and search for “Hatch Lighting.” Download the application. Open the app, and then enter the password provided by your Hatch Lighting sales representative.



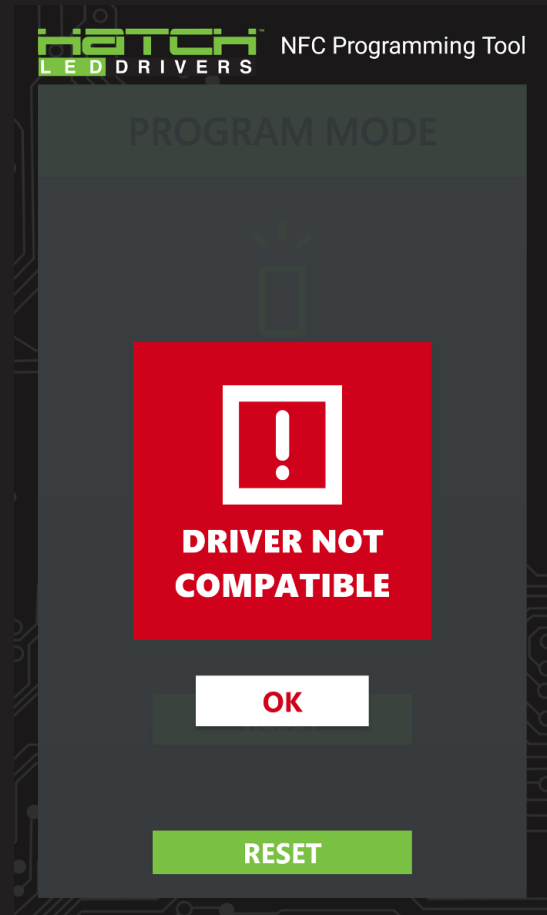
Program the Driver

1. Search for the driver by placing the NFC receiver of the phone on the “T” in HATCH on the programming port.
2. Adjust the output current to the desired level by using the slider bar.
3. Program the driver by touching and holding the phone on the black programming port on the PLC driver.



Program the Driver

4. You will receive a confirmation message showing the driver has been successfully programmed.
5. If an incorrect driver is scanned, a message showing the driver is not compatible with the current programming settings will appear.



Programming Tips

1. Place the NFC receiver of the phone on the "T" in HATCH on the programming port for best results.
2. Do not move the phone away from the programming port too quickly. Wait until you see the SUCCESS confirmation on the screen.

Programming Port Driver

